



T.S.K. CRANE SERVICE CO.,LTD.

Tel : 0-2874-0011, 0-1641-9621-2 Fax : 0-2874-0309

Load Chart

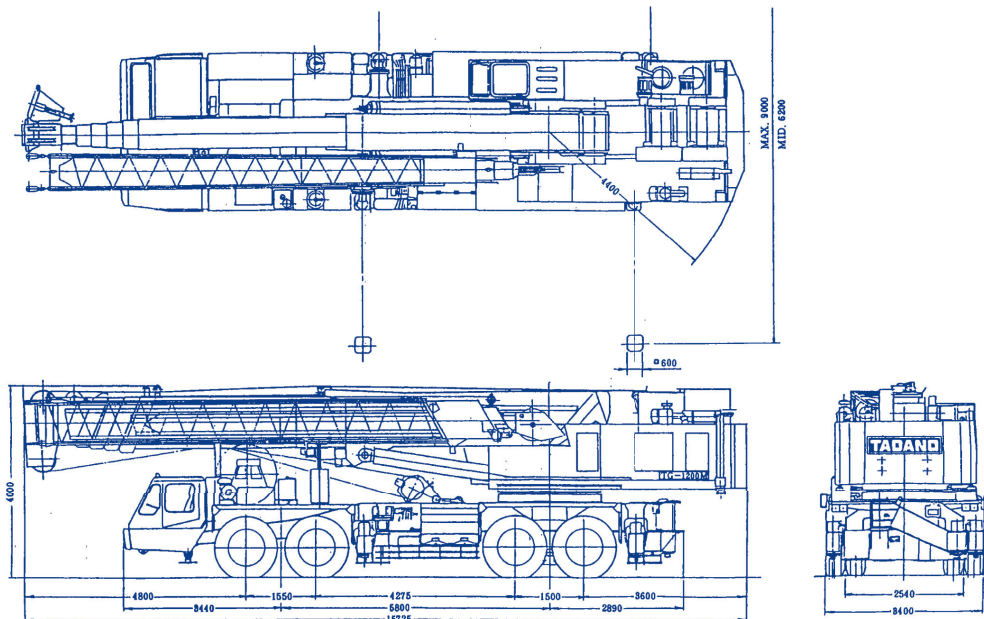


**FOR TRUCK CRANE 120 TONS
MODEL : TADANO TG - 1200M - 1**

CRANE SPECIFICATIONS

Max. Lifting Height	120 ton (120,000 kg.)	Working Radius 3.2 m.
Boom	Boom Section	7 Sections
	Length	12.0 / 17.7 / 23.4 / 29.1 / 34.8 / 42.4 / 50.0 m.
	Jib 3	11.10 / 18.90 / 26.00 m.
Jib	Boom	3 Staged swing around boom extensions.
Dimensions	Length	12.13 m.
	Width	3.4 m.
	Height	2.96 m.
Wire Rope	Main Winch	22 mm. X 275 m. (Diameter x Length) T(T7 x 7) + 6 x WS (36) Designated type ordinary. Z twist Spin - resistant type / Breaking strength 41.5t.
	Auxiliary Winch	22mm. X 185 m. (Diameter x Length) T(T7 x 7) + 6 x WS (36) Designated type ordinary. Z twist Spin - resistant type / Breaking strength 38.0t.
Outriggers	2 Stages	Full extended width 9.0 m. Middle extended width 6.2 m.
Tires	Front	14.00-24-24PR
	Rear	14.00-24-24PR
Weights	Gross Weight	Total 36,930 kg.
		Front 13,810 kg.
		Rear 23,120 kg.

DIMENSIONS (1/100)



TOTAL RATED LOADS								Unit : ton
Outriggers fully extended + Front jack + Rear jack (360°)								
A \ B (m)	12.0 m	17.7 m	23.4 m	29.1 m	34.8 m	42.4 m	50 m	
3.2	120.00	50.00						
3.8	100.00	50.00						
4.0	95.00	50.00						
4.5	83.50	50.00	40.00					
5.0	74.20	50.00	40.00					
5.5	66.50	50.00	40.00					
6.0	60.20	50.00	40.00	32.00				
6.5	55.00	50.00	40.00	32.00	25.00			
7.0	50.20	46.80	40.00	32.00	25.00	15.00		
7.5	46.20	44.10	40.00	32.00	25.00	15.00		
8.0	42.60	41.50	38.00	32.00	25.00	15.00		
8.5	38.50	39.20	36.00	32.00	25.00	15.00		
9.0	36.80	37.00	34.00	30.40	25.00	15.00		
10.0	32.00	32.40	30.50	27.40	25.00	15.00	12.00	
11.0	28.00	28.50	27.75	25.00	22.40	15.00	12.00	
12.0		25.30	25.40	23.00	20.20	15.00	12.00	
14.0		20.00	19.50	19.50	17.00	15.00	12.00	
15.0		18.00	17.50	17.50	16.00	14.00	12.00	
16.0		16.00	16.00	15.60	15.00	13.20	11.50	
18.0			12.80	12.50	12.50	11.75	10.50	
20.0			10.00	10.00	10.00	10.30	9.50	
22.0			8.00	8.00	8.00	9.20	8.60	
24.0				6.50	6.50	7.50	7.70	
26.0				5.00	5.00	6.30	7.00	
28.0				3.70	3.80	5.20	5.90	
30.0					2.70	4.20	5.00	
32.0					1.80	3.20	4.20	
34.0						2.50	3.50	
36.0						1.80	2.90	
38.0						1.20	2.20	
40.0							1.70	
42.0							1.20	

A = Boom length (ความยาวของบูม)
 B = Working radius (ระยะห่างจากจุดยก)

TOTAL RATED LOADS FOR JIB							Unit : ton
Outriggers fully extended + Front jack + Rear jack (360°)							
E (°)	11.1 m		18.9 m		26.0 m		
	5°	30°	5°	30°	5°	30°	
80	6.00	3.00	4.00	1.50	2.50	1.00	
79	6.00	2.90	3.75	1.40	2.30	0.90	
78	6.00	2.85	3.55	1.30	2.15	0.85	
77	6.00	2.75	3.35	1.25	2.05	0.80	
75	5.40	2.65	3.00	1.15	1.80	0.70	
72	4.80	2.50	2.60	1.05	1.55	0.65	
70	4.40	2.40	2.40	1.00	1.40	0.60	
68	4.00	2.30	2.20	0.95	1.30	0.60	
65	3.45	2.15	1.90	0.90	1.15	0.55	
62	3.00	2.00	1.70	0.85	1.05	0.55	
60	2.75	1.90	1.55	0.80	1.00	0.50	
58	2.50	1.80	1.40	0.80	0.95	0.50	
55	2.10	1.65	1.25	0.75	0.85	0.50	
52	1.35	1.20	0.85	0.70	0.60		
50	0.95	0.85	0.55				
48	0.60	0.55					

C = Jib length
E = Boom angle

(ขนาดความยาวของจ๊อบ)
(มุมองศาของบูม)

D = Jib offset
(มุมมองสายของจ๊อบ)

