



T.S.K. CRANE SERVICE CO.,LTD.

Tel : 0-2874-0011, 0-1641-9621-2 Fax : 0-2874-0309

Load Chart



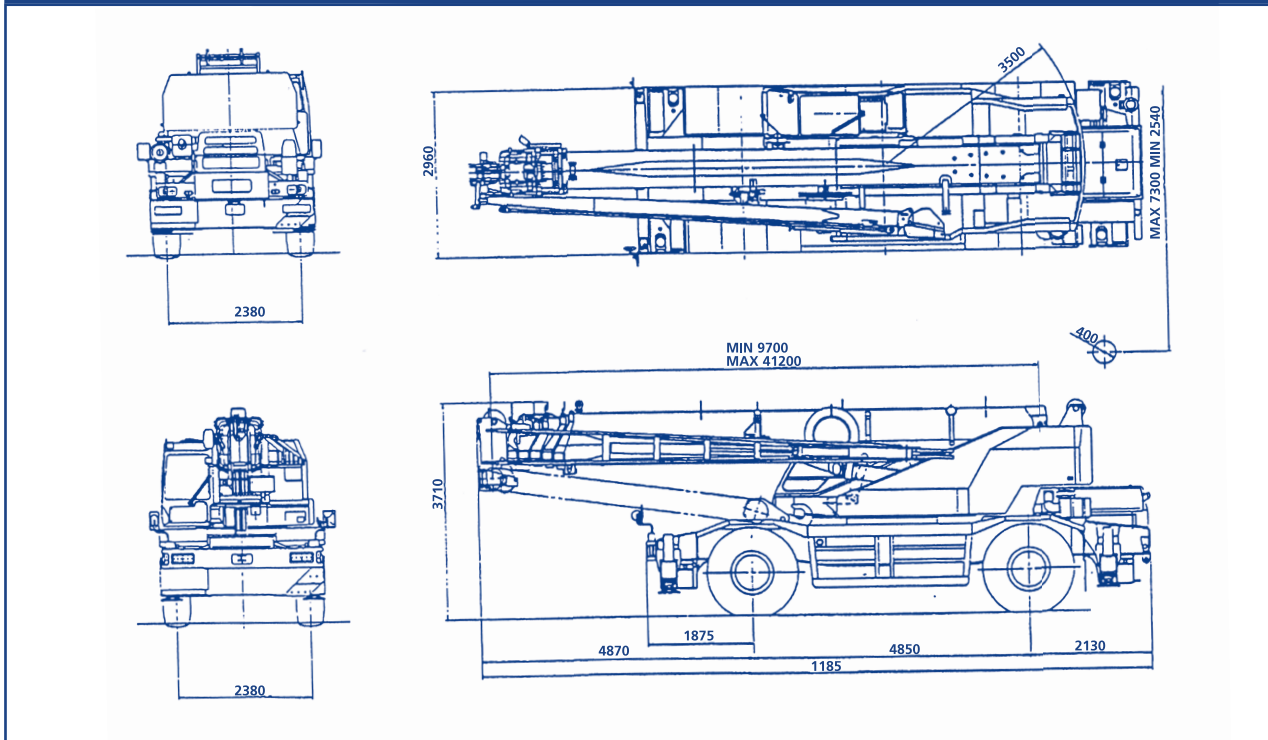
FOR ROUGH TERRAIN CRANE 50 TONS (CREVO)

MODEL : TADANO TR - 500M - 3

CRANE SPECIFICATIONS

Max. Lifting Height	50 ton (50,000 kg.)	Working Radius 3.0 m.
Boom	Boom Section	7 Sections
	Length	9.7 / 16.0 / 22.3 / 28.6 / 34.9 / 38.05 / 41.2 m.
	Jib 2	7.8 / 12.5 m.
Dimensions	Length	11.85 m.
	Width	2.96 m.
	Height	3.71 m.
Wire Rope	Main Winch	18 mm. X 224 m. (Diameter x Length) Spin - resistant wire rope
	Auxiliary Winch	18 mm. X 120 m. (Diameter x Length) Spin - resistant wire rope
Outriggers	3 Stages	Full extended width 7.3 m.
		Middle extended width 6.7 m., 5.5 m.
		Minimum extended width 4.0 m.
Tires	Front	505/95R25 183E ROAD
	Rear	505/95R25 183E ROAD
Weights	Gross Weight	Total 37,795 kg.
		Front 18,895 kg.
		Rear 18,900 kg.

DIMENSIONS (1/100)



TOTAL RATED LOADS								Unit : ton
Outriggers fully extended (7.3m)								-360° -
A \ B (m)	9.7 m	16.0 m	22.3 m	28.6 m	34.9 m	38.05 m	41.2 m	
2.5 m	50.0	30.0	20.0	12.0				
3.0 m	50.0	30.0	20.0	12.0				
3.5 m	45.0	30.0	20.0	12.0	11.0			
4.0 m	39.5	30.0	20.0	12.0	11.0	8.5		
4.5 m	35.5	30.0	20.0	12.0	11.0	8.5		
5.0 m	32.0	29.0	20.0	12.0	11.0	8.5	7.0	
5.5 m	29.0	27.0	19.8	12.0	11.0	8.5	7.0	
6.0 m	26.5	24.6	18.7	12.0	11.0	8.5	7.0	
6.5 m	24.0	22.7	17.6	12.0	11.0	8.5	7.0	
7.0 m	22.0	20.9	16.7	12.0	11.0	8.5	7.0	
8.0 m		17.8	15.0	12.0	10.1	8.5	7.0	
9.0 m		14.6	13.4	11.5	9.4	8.5	7.0	
10.0 m		12.0	11.3	10.5	8.7	7.9	7.0	
11.0 m		10.0	9.4	9.5	8.1	7.35	6.5	
12.0 m		8.3	8.0	8.6	7.5	6.85	6.0	
13.0 m		7.1	6.8	7.4	7.0	6.4	5.6	
14.0 m			5.9	6.6	6.5	6.0	5.3	
16.0 m			4.2	5.0	5.4	5.3	4.7	
18.0 m			3.0	3.8	4.3	4.5	4.15	
20.0 m				2.95	3.4	3.55	3.6	
22.0 m				2.3	2.7	2.85	3.0	
24.0 m				1.65	2.1	2.3	2.4	
26.0 m					1.65	1.85	1.95	
28.0 m					1.25	1.4	1.55	
30.0 m					0.9	1.0	1.2	
32.0 m						0.7	0.9	
34.0 m							0.6	
a (°)	0 ~ 83					16 ~ 83	28 ~ 83	

A = Boom length (ความยาวของบูม)
 B = Working radius (ระยะห่างจากจุดยึด)
 F = Standard hook (รอกมาตรฐาน)
 a = Boom angle range (for the unladen condition) (มุมองศา)

TOTAL RATED LOADS FOR JIB

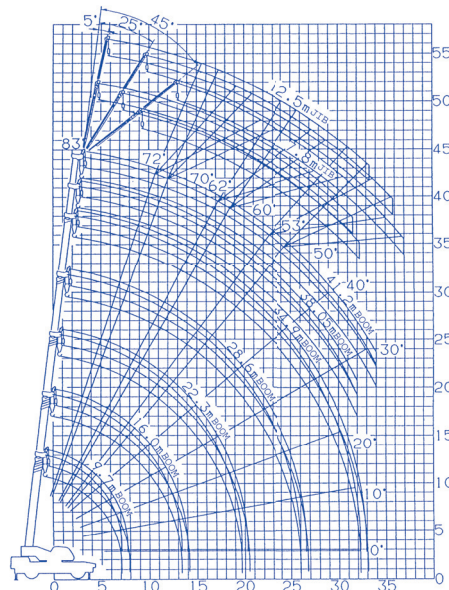
Unit : ton

Outriggers fully extended (7.3 m) -360°-												
C D	7.8 m						12.5 m					
	5°		25°		45°		5°		25°		45°	
E (°)	B (m)	M	B (m)	M	B (m)	M	B (m)	M	B (m)	M	B (m)	M
83	6.6	3.5	9.0	2.4	10.7	1.6	8.0	2.5	11.5	1.4	14.5	0.8
76	13.6	3.5	15.5	2.4	16.8	1.6	15.9	2.5	18.7	1.4	21.2	0.8
74	15.3	3.25	17.3	2.2	18.4	1.5	17.9	2.25	20.5	1.4	22.9	0.8
72	17.0	2.95	18.8	2.1	20.1	1.48	19.7	2.05	22.4	1.3	24.7	0.8
70	18.7	2.65	20.6	1.95	21.6	1.45	21.6	1.9	24.2	1.25	26.4	0.8
68	20.3	2.4	22.3	1.85	23.2	1.43	23.4	1.75	25.9	1.2	28.0	0.8
65	22.6	2.1	24.5	1.7	25.3	1.4	25.9	1.55	28.3	1.1	30.2	0.77
60	26.5	1.7	28.1	1.45	28.8	1.3	30.1	1.3	32.2	0.95	33.8	0.74
55	29.8	1.2	31.3	1.1	31.8	1.0	33.8	1.0	35.8	0.85	37.1	0.72
50	32.7	0.65	34.1	0.55	34.4	0.5	36.9	0.5	38.7	0.43	39.6	0.4
a (°)	49 ~ 83											

Outriggers middle extended (6.7 m) -Over sides-												
C D	7.8 m						12.5 m					
	5°		25°		45°		5°		25°		45°	
E (°)	B (m)	M	B (m)	M	B (m)	M	B (m)	M	B (m)	M	B (m)	M
83	6.6	3.5	9.0	2.4	10.7	1.6	8.0	2.5	11.5	1.4	14.5	0.8
76	13.6	3.5	15.5	2.4	16.8	1.6	15.9	2.5	18.7	1.4	21.2	0.8
74	15.3	3.25	17.3	2.2	18.4	1.5	17.9	2.25	20.5	1.4	22.9	0.8
72	17.0	2.95	18.8	2.1	20.1	1.48	19.7	2.05	22.4	1.3	24.7	0.8
70	18.7	2.65	20.6	1.95	21.6	1.45	21.6	1.9	24.2	1.25	26.4	0.8
68	20.3	2.4	22.3	1.85	23.2	1.43	23.4	1.75	25.9	1.2	28.0	0.8
65	22.6	2.1	24.5	1.7	25.3	1.4	25.9	1.55	28.3	1.1	30.2	0.77
60	26.4	1.6	28.1	1.45	28.8	1.3	30.1	1.3	32.2	0.95	33.8	0.74
55	29.6	0.9	31.2	0.8	31.7	0.75	33.6	0.75	35.6	0.65	37.0	0.55
53	30.8	0.65	32.3	0.6	32.7	0.55	34.9	0.55	36.8	0.5	38.1	0.4
a (°)	52 ~ 83											

B = Working radius (ระยะห่างจากจุดยก) C = Jib length (ขนาดความยาวของจ๊อบ)
 D = Jib offset (มุมมองศาชองจ๊อบ) E = Boom angle (มุมมองศาชองบูม)
 M = Total rated loads (อัตรารับน้ำหนัก) a = Boom angle range (for the unladen condition) (มุมมองศาช)

WORKING RADIUS - LIFTING HEIGHT



LIFTING HEIGHT (m)

WORKING RADIUS (m)