



T.S.K. CRANE SERVICE CO.,LTD.

Tel : 0-2874-0011, 0-1641-9621-2 Fax : 0-2874-0309

Load Chart

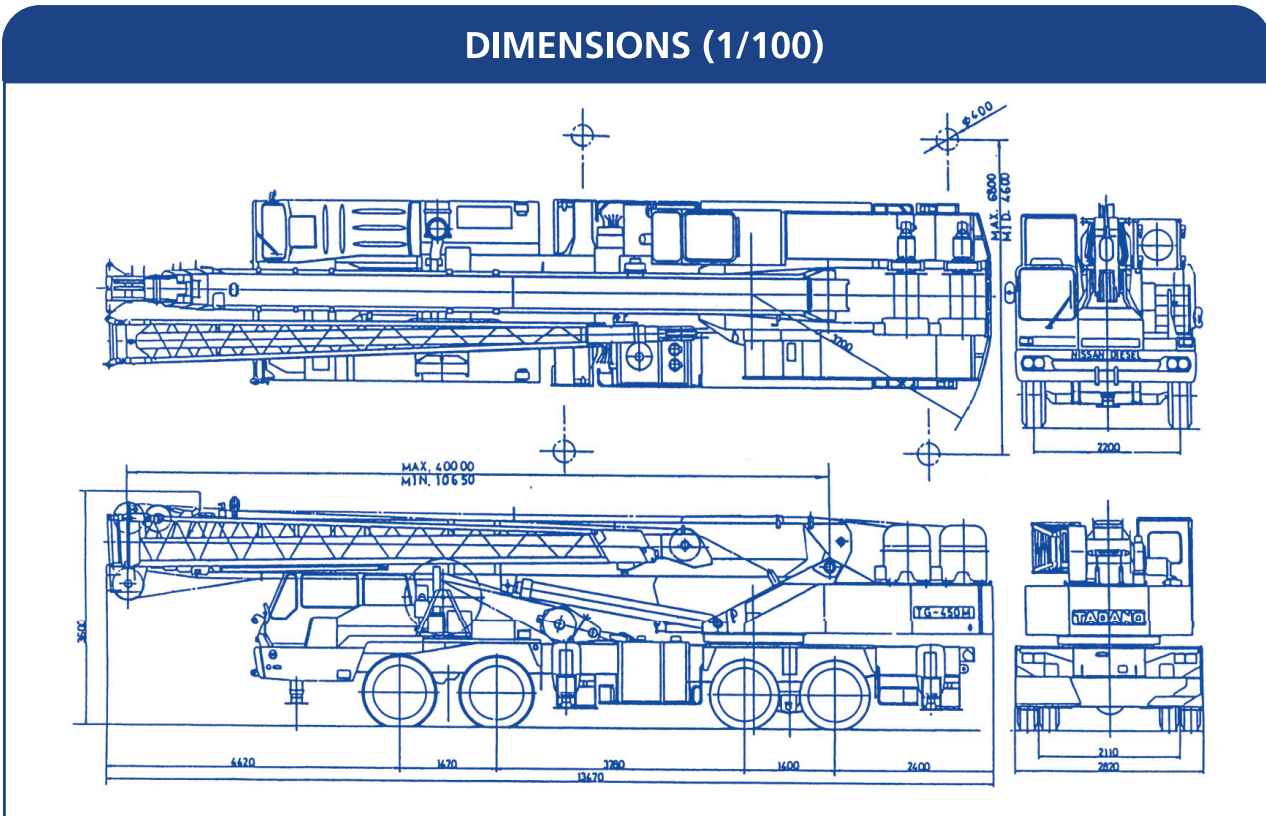


**FOR TRUCK CRANE 45 TONS
MODEL : TADANO TG - 450M - 2**

CRANE SPECIFICATIONS

Max. Lifting Height	45 ton (45,000 kg.)	Working Radius 3.0 m.
Boom	Boom Section	5 Sections
	Length	10.65/18.02/25.35/32.67/40.0 m.
	Jib 2	9.0/16.0 m.
Dimensions	Length	13.47 m.
	Width	2.82 m.
	Height	3.60 m.
Wire Rope	Main Winch	18 mm. X 185 m. (Diameter x Length) 7 x 7 + 6 x Fi (29) Class C ordinary.Z twist Spin - resistant wire rope / Breaking strength 24.3t.
	Auxiliary Winch	18 mm. X 130 m. (Diameter x Length) 7 x 7 + 6 x Fi (29) Class B ordinary.Z twist Spin - resistant wire rope / Breaking strength 22.3t.
Outriggers	2 Stages	Full extended width 6.8 m.
		Middle extended width 4.6 m.
Tires	Front	13.00-20-20PR
	Rear	11.00-20-14PR
Weights	Gross Weight	Total 37,250 kg.
		Front 16,410 kg.
		Rear 20,840 kg.

DIMENSIONS (1/100)



TOTAL RATED LOADS						Unit : ton
A \ B (m)	10.65 m	18.02 m	25.35 m	32.67 m	40.00 m	
3.0	45.00	28.00				
3.5	40.50	28.00	20.00			
4.0	36.50	28.00	20.00			
4.5	33.00	28.00	20.00			
5.0	30.20	28.00	20.00	13.00		
5.5	27.50	25.60	20.00	13.00		
6.0	25.00	23.50	20.00	13.00		
6.5	22.70	21.80	18.00	13.00	7.50	
7.0	20.70	20.00	16.80	13.00	7.50	
7.5	18.70	18.50	15.70	13.00	7.50	
8.0	17.30	17.00	14.80	12.30	7.50	
9.0	13.85	13.65	13.20	11.00	7.50	
10.0		10.95	10.85	10.00	7.30	
11.0		9.00	8.85	9.10	6.80	
12.0		7.50	7.35	8.20	6.30	
14.0		5.35	5.20	6.00	5.50	
16.0		3.85	3.70	4.50	4.70	
18.0			2.50	3.40	3.95	
20.0			1.60	2.45	3.10	
22.0			0.85	1.75	2.35	
24.0				1.15	1.75	
26.0				0.65	1.25	
28.0					0.85	
30.0					0.50	

A = Boom length (ความยาวของบูม)
 B = Working radius (ระยะห่างจากจุดยก)

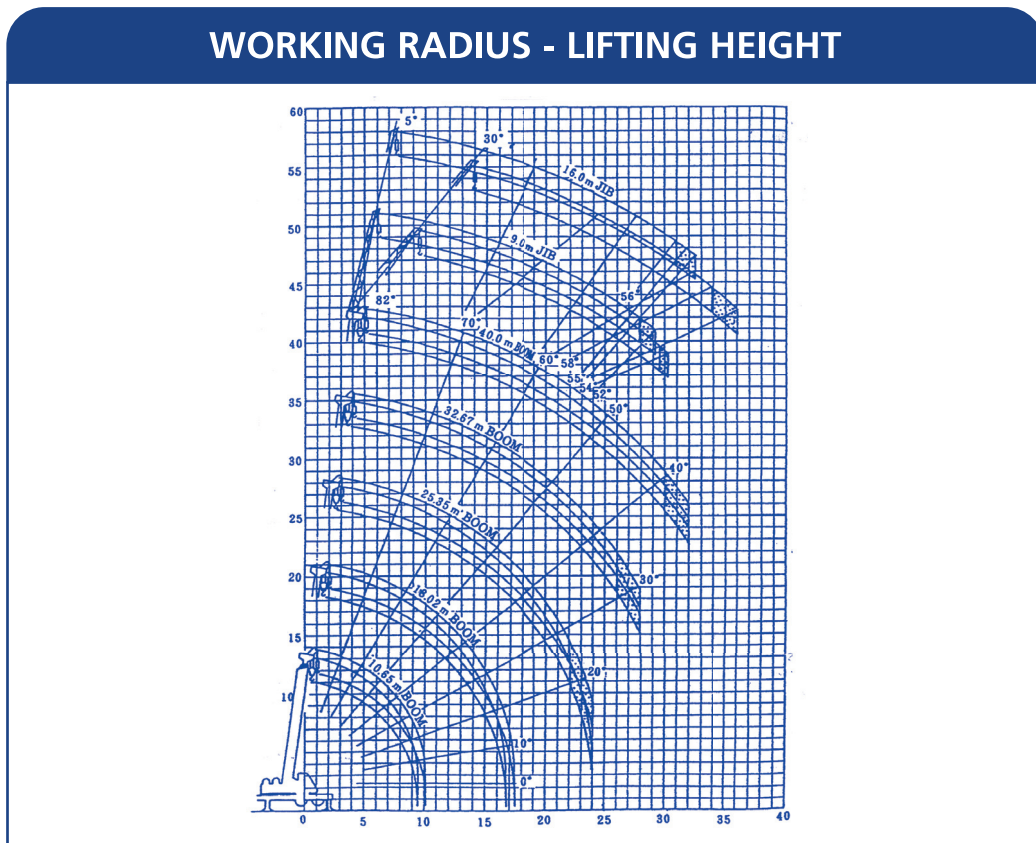
TOTAL RATED LOADS FOR JIB					Unit : ton
E (°)	C	9.0 m.		16.0 m.	
	D	5°	30°	5°	30°
82		3.50	2.00	2.00	1.00
80		3.50	2.00	2.00	1.00
79		3.50	2.00	2.00	1.00
78		3.50	1.96	2.00	1.00
77		3.30	1.91	2.00	0.97
76		3.12	1.86	2.00	0.95
75		2.97	1.82	1.92	0.93
73		2.68	1.73	1.76	0.89
70		2.33	1.58	1.53	0.84
68		2.15	1.49	1.40	0.81
65		1.91	1.36	1.23	0.76
63		1.75	1.29	1.14	0.73
60		1.25	1.00	0.90	0.65
58		0.95	0.75	0.65	0.45
56		0.70	0.55	0.45	
55		0.55	0.45		
54		0.45			

C = Jib length
E = Boom angle

(ขนาดความยาวของจ๊อบ) D = Jib offset
(มุมมองเสาของบูม)

(มุมมองเสาของจ๊อบ)

WORKING RADIUS - LIFTING HEIGHT



WORKING RADIUS (m)

LIFTING HEIGHT (m)