



**T.S.K. CRANE SERVICE CO.,LTD.**

Tel : 0-2874-0011, 0-1641-9621-2 Fax : 0-2874-0309

# Load Chart

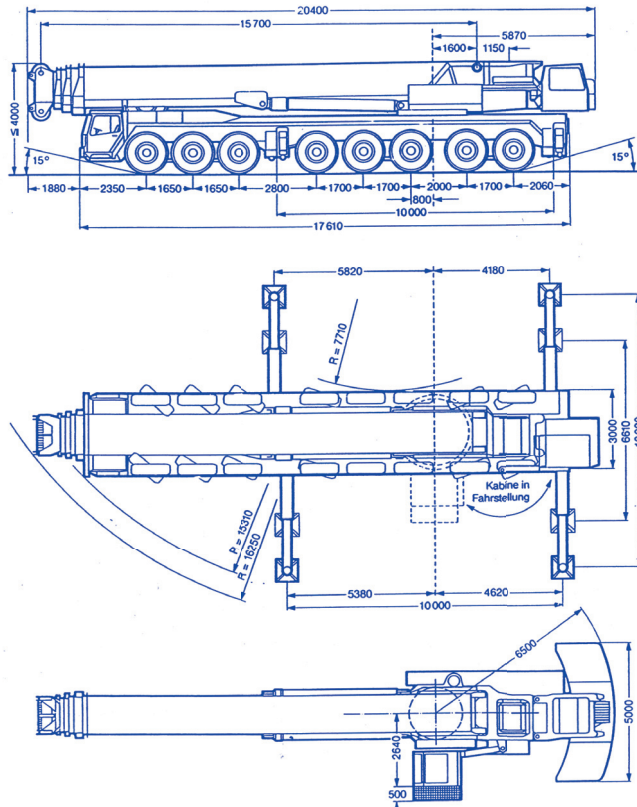


**FOR ALL TERRAIN CRANE 400 TONS  
MODEL : LIEBHERR LTM - 1400**

### CRANE SPECIFICATIONS

Max. Lifting Height	400 ton (400,000 kg.)	Working Radius 3.0 m.	
Boom	Boom Section	3 Sections	
	Length	15.7 / 21.4 / 26.1 / 27 / 31.7 / 36.5 / 42.1 / 42.9 / 50 m.	
Jib	Fly (Length)	12 m. - 61 m.	
	Luffing (Length)	21 m. - 84 m.	
Dimensions	Length	20.4 m.	
	Width	3.0 m.	
	Height	4.0 m.	
Wire Rope	Main Winch	25 mm. X 480 m. (Diameter x Length) Spin - resistant wire rope	
Outriggers	2 Stages	Full extended width	10 m.
		Middle extended width	6.61 m.
Tires	Front	14.00 R25 (all wheels)	
	Rear	14.00 R25 (all wheels)	
Weights (Carrier only)	Gross Weight	Total 96,000 kg.	

### DIMENSIONS (1/100)





T.S.K. CRANE SERVICE CO.,LTD.

Tel : 0-2874-0011, 0-1641-9621-2 Fax : 0-2874-0309

LIEBHERR LTM - 1400



15.7 m- 50 m



360°



95 t



75%

m	15.7 m		21.4 m	26.1 m	27 m	31.7 m	36.5 m		42.1 m	46.9	50 m	m
3	400	350										3
3.5	340	310										3.5
4	300	280										4
4.5	275	252	245									4.5
5	250	234	229		160							5
5.5	233	217	214	192	152							5.5
6	218	203	200	181	145	155						6
7	192	180	176	163	132	140	123	101	106	92		7
8	171	160	157	148	122	127	113	94	99	86	80	8
9	154	145	142	135	113	116	104	87	93	81	76	9
10	139	131	128	123	105	107	96	81	87	76	72	10
12	114	108	105	104	92	92	83	71	77	68	64	12
14			89	88	81	80	72	63	67	61	57	14
16			75	74	73	71	64	56	59	55	50	16
18			63	62	66	63	57	51	53	49.5	45	18
20				52	59	54	52	46.5	48	45	41	20
22				45	51	46	46.5	42.5	43.5	41	37	22
24					44.5	39.5	40	39	40	37.5	34	24
26						34	35	36	36.5	34.5	31	26
28						30	30.5	33.5	32	32	28.6	28
30							27	31	28.7	29.4	26.4	30
32							23.9	28.7	25.5	26.3	24.5	32
34							21.2	26.1	22.9	23.5	22.7	34
36									20.6	21.2	21.1	36
38									18.5	19.2	19.3	38
40										17.3	17.4	40
42										15.6	15.7	42
44											14.2	44
46											12.9	46
I	0	0	50	92	0	92	92	0	92	92	100	I
II	0	0	0	0	50	50	92	92	92	92	100	II
% III	0	0	0	0	50	0	0	92	50	92	100	III

TAB 78023



15.7 m- 50 m



360°



65 t



75%

m	15.7 m	21.4 m	26.1 m	27 m	31.7 m	36.5 m		42.1 m	46.9	50 m	m
3	310										3
3.5	283										3.5
4	259										4
4.5	239	235									4.5
5	221	217									5
5.5	206	202	192	152							5.5
6	192	189	181	145	155						6
7	170	167	163	132	140	123	101	106	92		7
8	150	148	148	122	127	113	94	99	86	80	8
9	134	132	131	113	116	104	87	93	81	76	9
10	120	117	116	105	107	96	81	87	76	72	10
12	98	95	94	92	91	83	71	77	68	64	12
14		74	73	79	71	69	63	67	61	57	14
16		58	57	64	58	56	56	56	55	50	16
18		46.5	45.5	52	47	47	51	47	46.5	45	18
20			37	43	38	39	44.5	40	40	39.5	20
22			30.5	36.5	31.5	32.5	37.5	34.5	34.5	34	22
24				31.5	26.7	27.4	32.5	29.3	29.9	29.7	24
26					22.6	23.3	28.3	25.2	26	26	26
28					19.1	19.8	24.9	21.7	22.5	22.7	28
30						16.8	22	18.8	19.6	19.8	30
32						14.3	19.7	16.3	17.1	17.3	32
34						12.3	17.7	14.1	14.9	15	34
36								12.2	13	13.1	36
38								10.6	11.3	11.4	38
40									9.9	10	40
42									8.6	8.7	42
44										7.5	44
46										6.6	46
I	0	50	92	0	92	92	0	92	92	100	I
II	0	0	0	50	50	92	92	92	92	100	II
% III	0	0	0	50	0	0	92	50	92	100	III

TAB 78042



15.7 m- 50 m



360°



30 t



75%

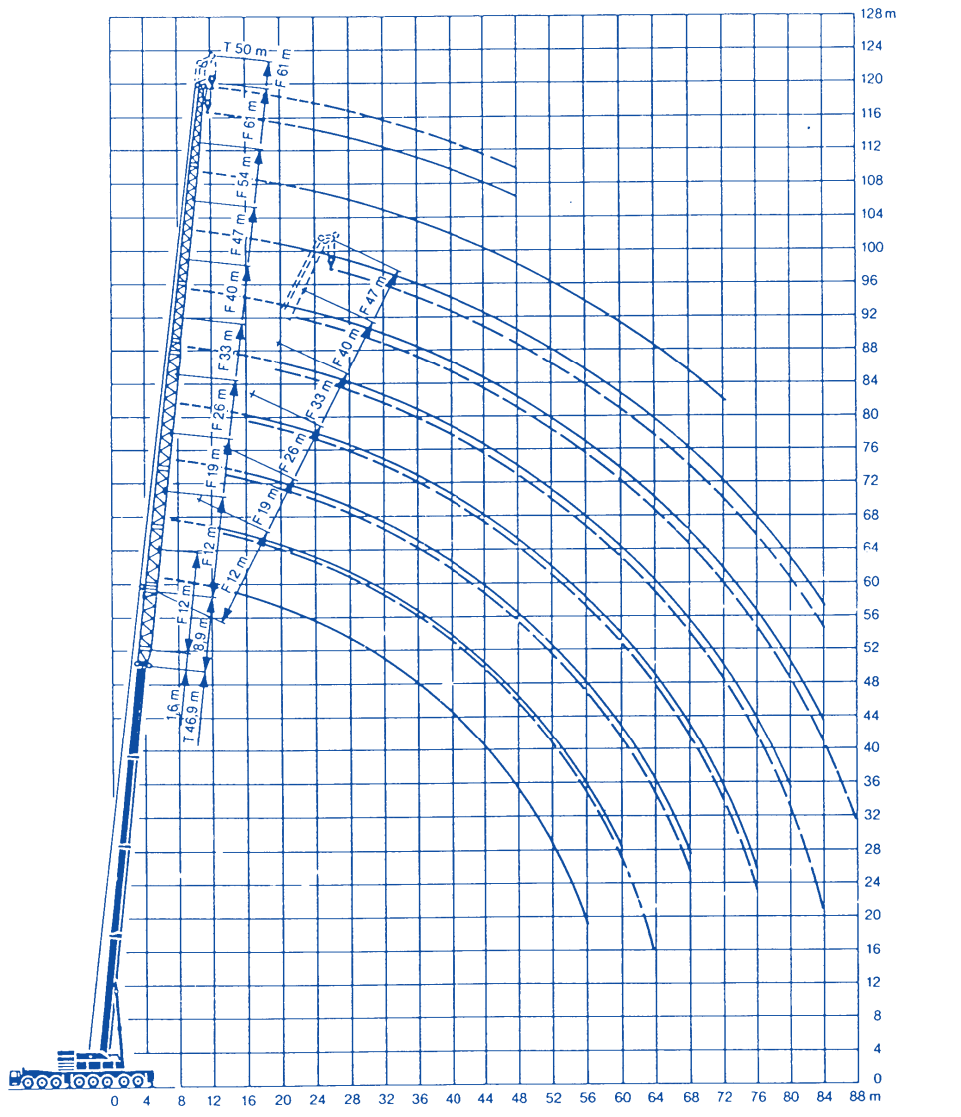
m	15.7 m	21.4 m	26.1 m	27 m	31.7 m	36.5 m		42.1 m	46.9 m	50 m	m
3	290										3
3.5	265										3.5
4	243										4
4.5	224	220									4.5
5	207	203									5
5.5	193	189	185	150							5.5
6	180	176	174	145	155						6
7	155	150	146	132	133	120	95	100	90		7
8	134	128	114	122	104	97	90	90	85	75	8
9	117	101	90	100	84	79	85	76	73	68	9
10	95	82	74	83	69	66	75	64	62	60	10
12	62	57	52	61	50	48	56	48	47	46	12
14		42	38.5	47	37.5	36.5	44	37	36.5	36	14
16		31	29.2	37	28.7	28.3	35.5	29.3	29.2	28.8	16
18		23.5	22.5	29.1	22.4	22.2	29.3	23.5	23.6	23.3	18
20			16.8	23.5	17.5	17.6	24.4	19	19.2	19.1	20
22			12.5	19.3	13.8	13.9	20.5	15.4	15.7	15.6	22
24				15.9	10.4	10.9	17.1	12.5	12.9	12.8	24
26					7.7	8.4	14.2	10	10.5	10.5	26
28					5.5	6.2	11.9	8	8.5	8.5	28
30						4.4	10	6.3	6.8	6.8	30
32						2.8	8.4	4.7	5.3	5.3	32
34							7.1	3.4	4.1	4.1	34
36									3	3	36

TAB 78025



WORKING RADIUS - LIFTING HEIGHT

telescopic boom.



LIFTING HEIGHT (m)

WORKING RADIUS (m)



84°  
18.8 m - 50 m



21 m - 84 m



360°



95 t

75%

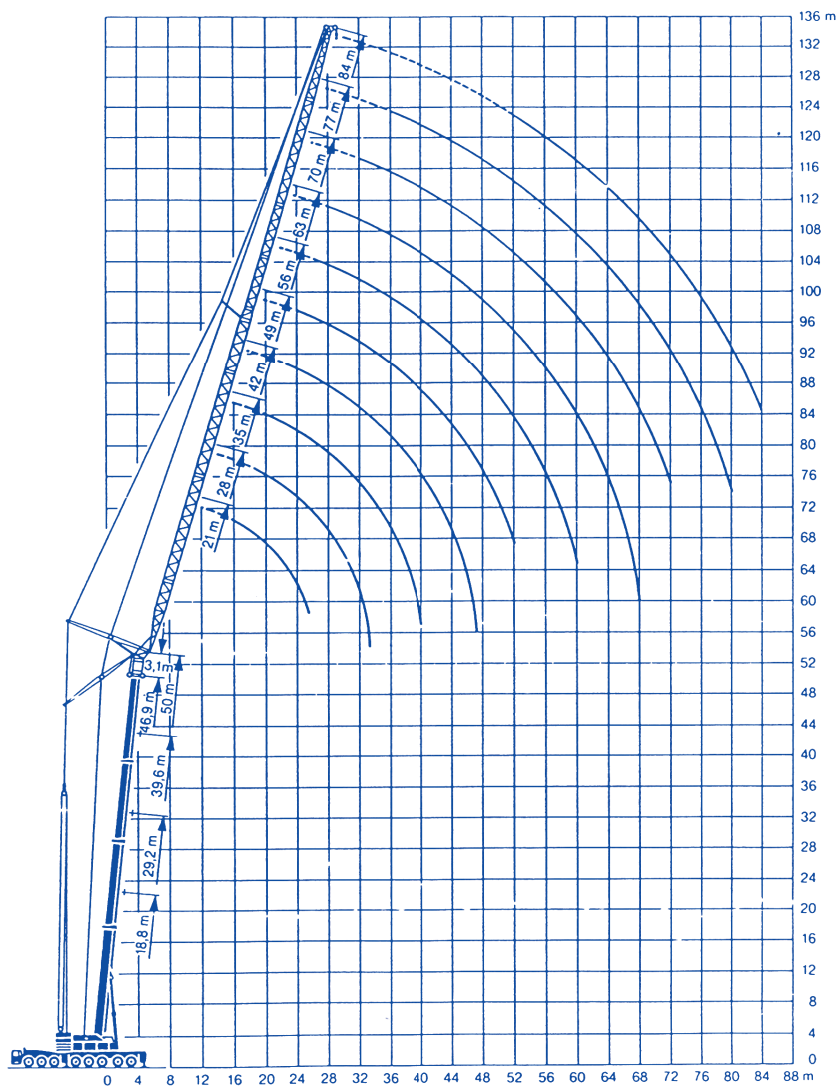
m	18.8										29.2 m										m
	21 m	28 m	35 m	42 m	49 m	56 m	63 m	70 m	77 m	84 m	21 m	28 m	35 m	42 m	49 m	56 m	63 m	70 m	77 m	84 m	
10	100																				10
11	96																				11
12	92	84									84										12
14	86	80	64								81	67									14
16	79	76	62	51							78	66	53								16
18	68	72	60	49	39						76	64	52	41							18
20	58	66	58	48	38.5	32.5					70	63	51	40	30						20
22		60	56	47	37.5	32	26				62	58	50	39.5	30	24					22
24		55	52	45	37	31.5	25.5	20				53	49	39	29.5	24	20				24
26		50	47	44	36	31	25.5	20	16			49	47	38	28.5	24	20	16			26
28		46	44	42	34	31	25	20	15.7	12		45	44	37.5	27.5	24	20	16	12.5		28
30			40	39	32.5	30.5	24.5	19.5	15.4	11.7		41	40	35	26.5	24	20	15.5	12.3	9	30
32			37	36	30.5	29	24.5	19.5	15.1	11.5			37	32.5	25.5	23	20	15.5	12.2	8.8	32
34			34	33	29	27.5	24	19.5	14.9	11.3			34	30.5	24.5	22	19.5	15.5	11.9	8.6	34
36				31	27.5	26	24	19	14.6	11.1			32	28.5	23.5	21.5	18.5	15	11.7	8.4	36
38				29	26	25	22.5	19	14.3	10.9				26.5	22.5	20.5	18	15	11.4	8.2	38
40				27	24	23	21.5	19	14	10.8				25	21.5	20	17.5	14.5	11.2	8.1	40
44					21.5	21	19.5	18.5	13.4	10.5					19.5	18.5	16.5	14	10.8	7.8	44
48					19	18.5	18	17	12.8	10.1					18	17	15.5	13.5	10.4	7.6	48
52						17	16.5	16	12.2	9.8						16	14.5	13	10	7.4	52
56							15.5	15	11.6	9.4						14.5	13.5	12	9.7	7.2	56
60							14.5	14	11	9							13	11.5	9.4	7	60
64								13	10.5	8.6								11	9	6.8	64
68								12	10	8.2								10.5	8.6	6.6	68
72									9.4	7.8									8.3	6.4	72
76										7.4									8	6.2	76
80										7										6	80
I	0										92										I
II	0										0										II
III	0										0										III

m	39.6 m										50 m										m
	21 m	28 m	35 m	42 m	49 m	56 m	63 m	70 m	77 m	84 m	21 m	28 m	35 m	42 m	49 m	56 m	63 m	70 m	77 m	84 m	
14	52																				14
16	51	43																			16
18	50	42	35																		18
20	48	41.5	34	28																	20
22	47	40.5	33.5	27.5	22																22
24	46	40	33	27	22	17.5															24
26		39	32.5	26.5	21.5	17.5	14														26
28		38	32	26	21.5	17.5	14	11													28
30		37	31	26	21	17	14	11	8.5												30
32		36	30	25	21	17	14	11	8.4	6											32
34			29	24.5	20.5	17	13.5	11	8.3	5.9											34
36			28	24	20	16.5	13.5	11	8.2	5.8											36
38			27	23	19	16	13.5	11	8.2	5.8											38
40				22	18.5	15.5	13.5	11	8.1	5.7											40
44				21	17.5	15	13	11	8	5.6											44
48					16.5	14.5	12.5	10.5	7.9	5.5											48
52						13.5	12	10.5	7.7	5.4											52
56						13	11.5	10.5	7.6	5.3											56
60							11	10.5	7.5	5.3											60
64								10.5	7.4	5.2											64
68								10	7.3	5.2											68
72									7.1	5.1											72
76									7	5.1											76
80										5											80
84										5											84
I	92										92										I
II	92										92										II
III	0										92										III

TAB 78117

**WORKING RADIUS - LIFTING HEIGHT**

telescopic boom.



LIFTING HEIGHT (m)

WORKING RADIUS (m)